

## Bass Lake

### Fisheries

Primary specie- Largemouth Bass  
Secondary specie- Bluegill, Northern Pike

### Water Quality Assurance

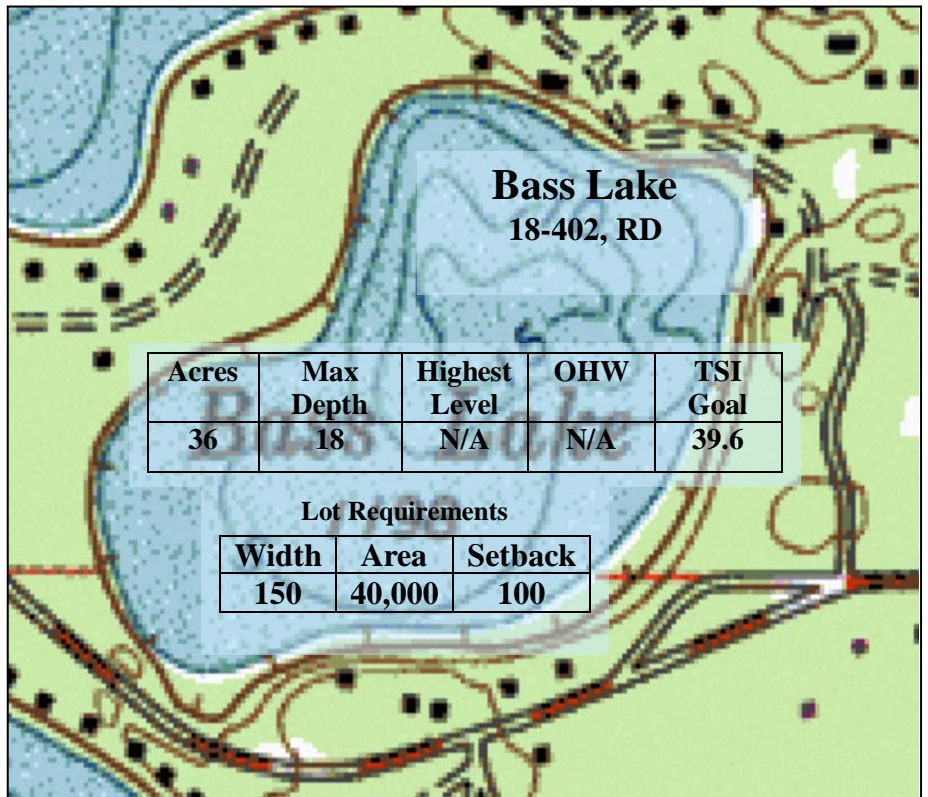
Current TSI Goal: 39.6 or less  
Current TSI (1996): 38.3

### Water Quality Summary

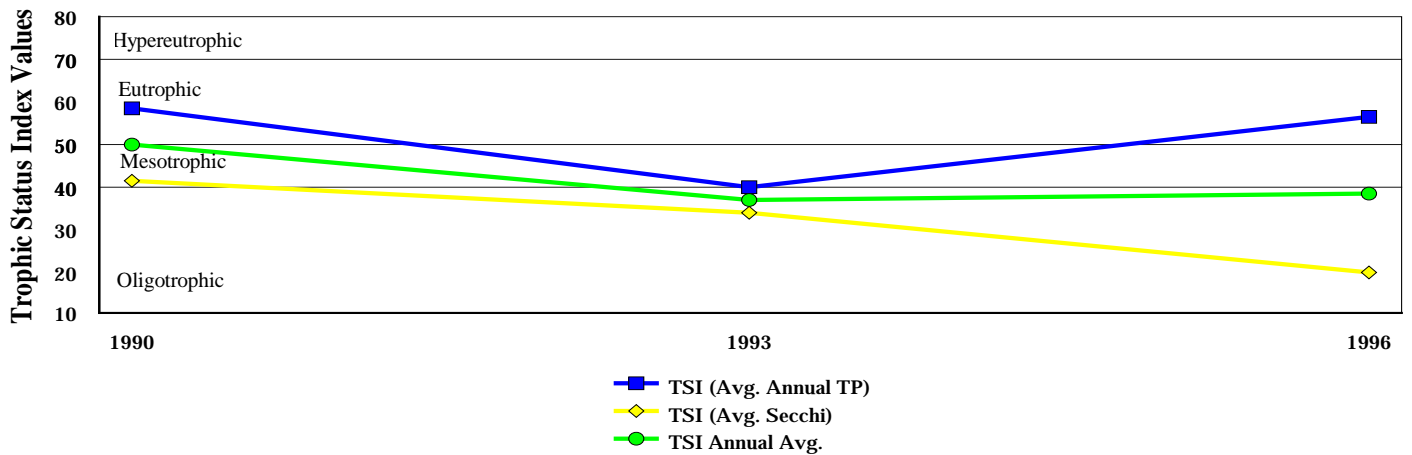
Synopsis: Not Current

### Management Strategy:

1. Start TSI lake monitoring and continue yearly overflights
2. Develop and implement watershed waste & storm water management Plan
3. Investigate the lakes internal loading
4. Develop and aquatic vegetation management plan



## Bass Lake



### Bass Lake (ID# 18-402)

